



**A** Complete the directions with sequencers.

after ▪ then ▪ finally ▪ first

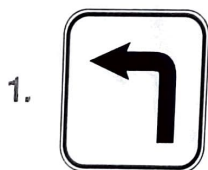
Hi Daniel,

Here are directions to my house. 1) \_\_\_\_\_, get on Interstate 10 and drive east for 25 miles. 2) \_\_\_\_\_ merge onto Interstate 15 going south. 3) \_\_\_\_\_ you merge, drive south for five miles. Take Exit 53 and turn left on Red Road. Go straight for three more miles. 4) \_\_\_\_\_ you'll see a library on the corner of Red Road and Berkley Road. Turn right at that corner. My house is the third one on the left.

Call me if you get lost. See you on Saturday!

Matt

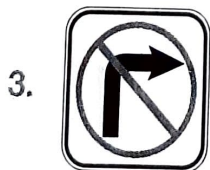
**B** Look at the signs and match them to their meanings.



Don't turn right.



Turn left.



Watch out for pedestrians.



Don't park here.

**A** Read the questions and mark (✓) your answers.

1. How long does it take you to get to school?

5 to 10 minutes

10 to 20 minutes

20 to 30 minutes

more than 30 minutes

2. How do you get to school?



by bus



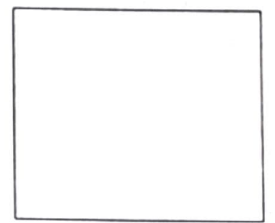
by bike



by car



on foot



3. What do you pass on your way to school?



a playground



a hospital



a movie theater



a bank



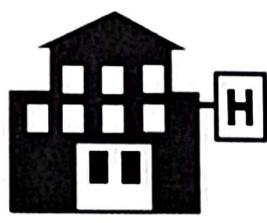
a grocery store



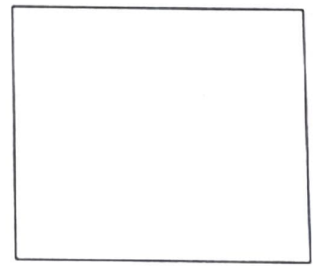
a post office



a library



a hotel



**B** Write about your daily trip to school in your notebook.

- Write how long your trip takes, how you travel, and what you see.
- Use the information in activity A.
- Useful phrases:

*It takes me \_\_\_ minutes to get to school.*

*I usually ride my bike to school.*

*First, I pass a hotel and a bank.*